

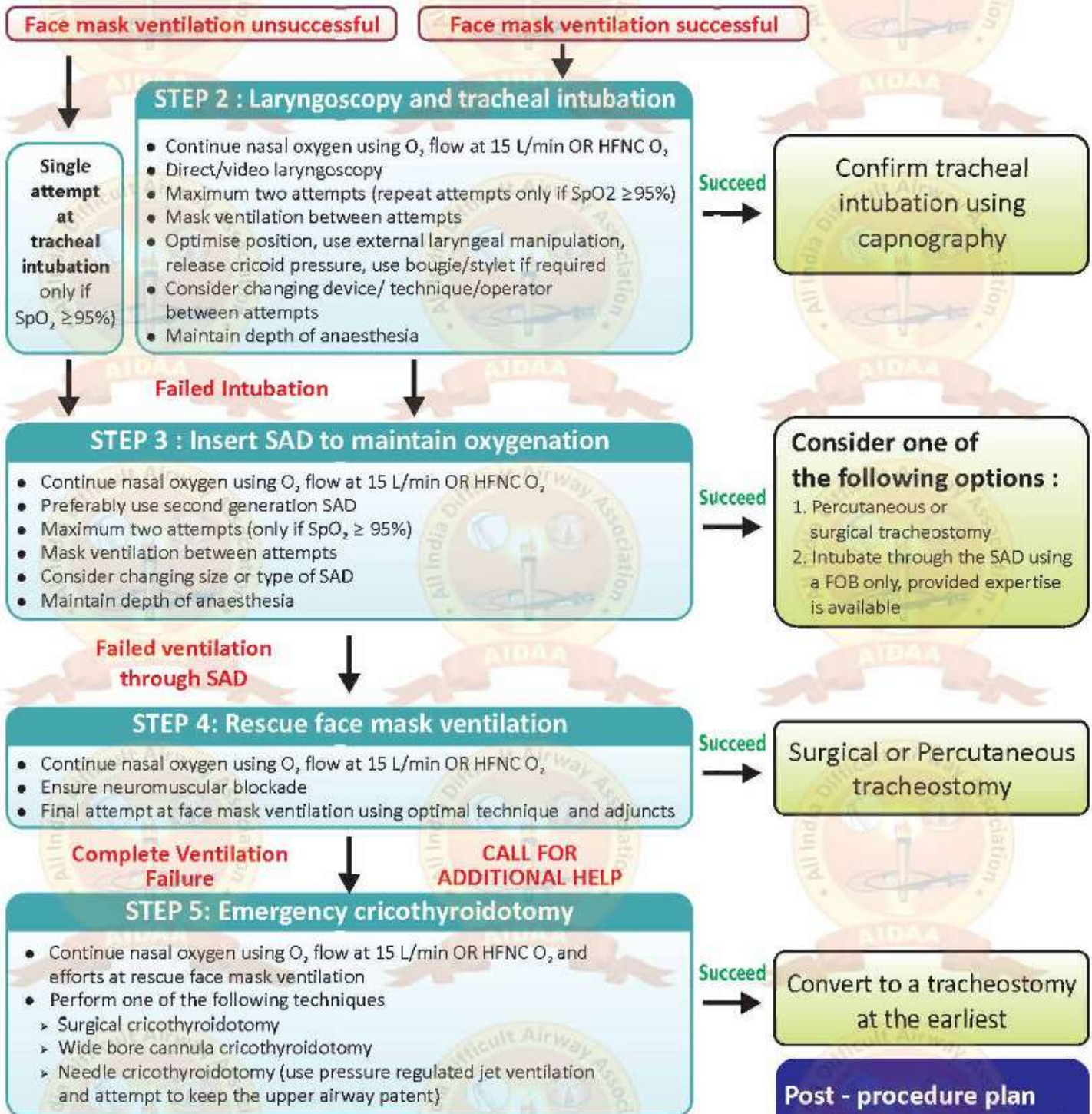
AIDAA 2016 Guidelines for Tracheal Intubation in the Intensive Care Unit



STEP 1 : Preoxygenation and induction of anaesthesia

- Two persons (one experienced)
- Optimise preoxygenation with one of the following :
 - Noninvasive ventilation with 100% O₂, pressure support of 5-15 cm H₂O with PEEP of 5 cm H₂O for 3 minutes (nasal cannula with O₂ flow at 15 L/min)
 - HFNC O₂ therapy
- Induction - Etomidate or Ketamine with Succinylcholine (if not contraindicated) or Rocuronium
- Use cricoid pressure
- IPPV with bag-valve mask with reservoir bag (use external PEEP valve set to 5-10 cm H₂O if available) / IPPV with PEEP using the ventilator

CALL FOR HELP



This flow chart should be used in conjunction with the text

FOB = Fibreoptic bronchoscope

HFNC = High flow nasal cannula

IPPV = Intermittent positive pressure ventilation

O₂ = Oxygen

PEEP = Positive end-expiratory pressure

SAD = Supraglottic airway device

SpO₂ = Oxygen saturation

Post - procedure plan

1. Further airway management plan
2. Treat airway oedema if suspected
3. Monitor for complications
4. Counselling and documentation